

POST FRAME

BUILDINGS





WE GET IT.

With how busy you are, it's hard to stay on top of the long list of all the products out there. But that doesn't change the fact that your customers are counting on you to deliver a quality finished project on schedule.

That's why we put together this post-frame building catalog with some of our most popular and needed products for pole-barns like the one you hope to build. We want to support you with expert advice and quality products to help make your next building project a success.





NEED MORE STORAGE?

Extend the life of your car, boat, RV, or other valuables by keeping them out of the weather and in a Cumberland Supply post frame building. We supply contractors and home owners with complete post frame building packages, custom designed to meet your storage needs.

Many options, styles, and colors available.

BLACK ROOF, CLAY SIDES, AND BRIGHT WHITE TRIM





IT BEAT THE RAIN... NOW KEEP IT DRY!

Post frame construction allows you to build larger buildings at lower material and labor costs than you could with traditional timber framing techniques.

Developed and matured in the 1930's, post frame agricultural buildings come in all shapes and sizes and are the time-tested, cost-effective method for protecting your equipment from the weather.

EVERGREEN ROOF AND LIGHT STONE SIDES



YOUR STOCK IS GROWING...

And if you need a post frame building to keep up with your growing livestock, Cumberland Supply is here to help!

Our post frame specialists will work with you to design a custom barn, lean-to, or shelter that is perfect for your needs and budget.



YOUR HORSE WANTS TO BE WARM AND DRY.

Post frame construction is great for indoor riding arenas, horse barns, or horse shelters.

Cumberland Supply also carries a full line of quality horse stall components to outfit your barn.



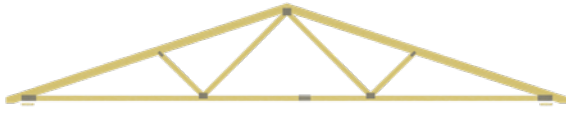
GREAT FOR YOUR OFFICE, STORE, OR SHOP!

A cost-effective solution to all your
light-commercial building needs.

A popular choice for commercial
storage units and auto shops.



STANDARD OPTIONS



STANDARD TRUSS

Stock Truss Sizes: 16', 20', 24', 26', 28', 30', 32', 36', 40', and 50'.

Stock Pitch: 4/12 (Rises 4" for every 12" horizontal).

Eave Overhang: 12" Finished (10.5" topcord + 1.5" faceboard = 12").

Typical Spacing: 4' on center.

Snow Load: 40 pounds ground snow load.

Wind Load: 90 - 125 mph.

Truss Drawings Available for: Connecticut, Delaware, New Jersey, Maryland, Pennsylvania, Virginia, West Virginia.

AVAILABLE UPGRADES

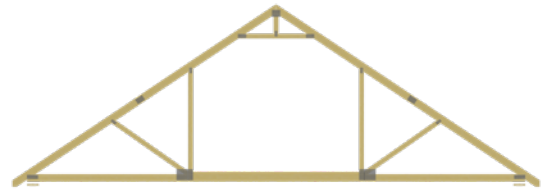
More Sizes: Special order trusses smaller than 20', or larger than 50'.

Pitch: Customized special order pitch angles.

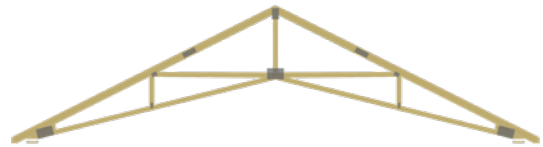
Gable Overhang: Ask for a 12" overhang on all 4 sides instead of just the eave.

Snow Load: Ask for trusses engineered for your snow load.

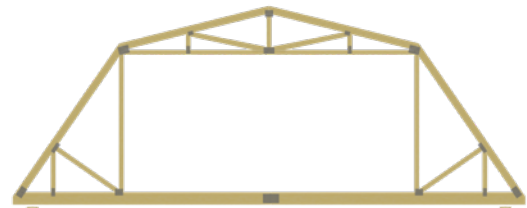
Styles: See more style options below:



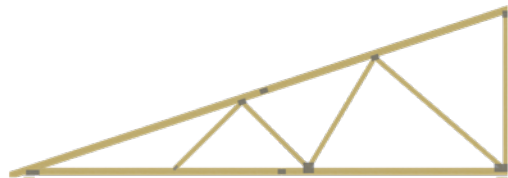
ATTIC TRUSS



SCISSOR TRUSS



GAMBREL TRUSS



MONO TRUSS



STANDARD OPTIONS



Post size for your building depends upon various factors including your building size, style, footer, wind-load, snow load, soil agents, and more. That is why it is always wise to consult a licensed engineer.

Based on the factors mentioned above, we may make our best recommendation of either solid sawn, 3-ply, 4-ply, or 5-ply GluLam posts, but we are not responsible if engineering principles or coding laws are not followed by you or your builder.

Standard Post Spacing: 8ft.

Standard Post Below-ground Depth: 42".

SOLID SAWN POSTS

Solid sawn posts are just as their name suggests. Our 4x4, 4x6, and 6x6 posts are sawn from solid wood and treated with either .60 treatment or .40 (ground contact) treatment.

Stocked Sizes (Available in 2' increments):

4x4 (.40): 8' to 16'

4x6 (.60): 8' to 20'

6x6 (.60): 8' to 24'

AVAILABLE UPGRADES



THE GREEN POST

The most affordable in-ground solution to post decay, the Green Post provides superior protection from the harmful effects of concrete, microorganisms, corrosive soils agents, soil nutrients, moisture, and oxygen that can cause rot and post failure.

Four features give the The Green Post it's strength: 1) the bottom 6 ft or the entire post is treated for ground contact, 2) the bottom of the post is notched to maximize uplift restraint, 3) the post is coated with a protective layer of bituminous coating that has been used in resisting rot for over a thousand years, and 4) the chemical treatment and bituminous coating are sealed around the post with a polyethylene membrane that protects the soil and the post.

Stocked Sizes (Available in 2' increments):

3-ply 2x6: 14' to 32'

4x6 (Fully Treated): 12' to 18'

6x6 (Fully Treated): 16'

GLULAM POSTS

Glued-laminated timber, or glulam, is a timber product manufactured from dimensional lumber, called laminating stock. This laminating stock comes in 2" nominal thickness and varying widths. The lamstock is finger-jointed together end to end, then glued together in laminations using waterproof, state of the art adhesives, creating a high strength-to-weight ratio. They are known for their strength, straightness, and resistance to twisting and warping. That means they are great for taller buildings, or cases involving high wind and/or snow loads.

The bottom 6' are treated for ground contact. 3-ply and 4-ply are also available in full treatment.

Stocked Sizes (Available in 2' increments):

3-ply 2x6: 12' to 32'

3-ply 2x8: 16' to 32'

4-ply 2x6: 14' to 32'

4-ply 2x8: 16' to 40'

3-ply and 4-ply full treatment: 8' to 40'

PERMA COLUMN

Perma-Columns are GluLam posts attached to five-foot precast concrete columns that keep wood out of the ground, ensuring your building's foundation will never rot. They are the first product to combine the economy of pole building construction with the durability of a concrete foundation. Simple installation with no waiting on concrete trucks. No treated wood in the ground. No more rot problems!

Also stocking drill-set brackets for pre-poured walls or floors, and wet-set brackets for wet-poured applications.



ONE POUR

Nail-On Brackets provide pole barn posts incredible uplift resistance and are easily installed in the field with hot dipped nails and framing hammer, or positive placement air nailer. Only requires a one day process and a single visit by a concrete truck.



STANDARD OPTIONS



#1 YELLOW PINE HEADER

Mostly used as headers for smaller buildings with short spans.

Stocked Sizes
(Available in 2' increments):

2x4: 16'
2x6: 10' to 20'
2x8: 10' - 24'
2x10: 10' - 24'
2x12: 10' - 24'



Y.P. MSR HEADER

Yellow pine that is machine stress rated (MSR) is often used where greater strength is needed on larger buildings and greater spans.

Stocked Sizes
(Available in 2' increments):

2x10: 12' - 20'
2x12: 10' - 20'



PURLINS

2x4 purlins made from Spruce, Pine, or Fir (SPF) are fastened on top of the trusses running parallel with the ridge and roof eave, and typically spaced every 2 ft on center. This is in preparation for the fastening of the metal roof panels.

Purlins are also required when installing metal panels over top of asphalt shingles (see picture above) to prevent the roughness of the shingles from rubbing through the painted underside of the metal over time, as the roof expands and contracts with the changing temperature.



GIRTS

2x4 SPF girts are used to span the posts that make up the exterior walls of your post frame building. They run horizontally and are usually attached 2ft on center to the outside of the posts. This is in preparation for the fastening of the metal wall panels.

AVAILABLE UPGRADES



LVL HEADER

Laminated Veneer Lumber (LVL) is an engineered wood product that uses multiple layers of thin wood assembled with adhesives.

It is typically used for headers and beams on larger buildings with long spans.

Since LVL's are made in a factory under controlled specifications, they are typically stronger, straighter, and more uniform than typical milled lumber.

Due to its composite nature, it is much less likely to warp, twist, bow, or shrink, making LVL's the ultimate strength-to-size ratio of any wood headers.

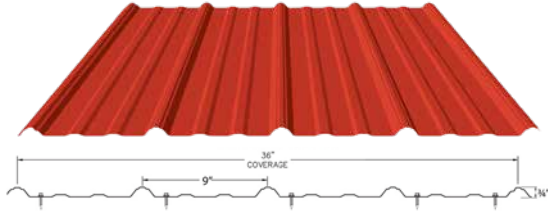
Stocked Sizes (Available in 2' increments):

1 3/4" x 9 1/2": 8" to 48"
1 3/4" x 7 7/8": 8' to 38' and 48'
1 3/4" x 14": 8' to 38' and 48'
1 3/4" x 16": 8' to 36' and 48'
1 3/4" x 18": 8' to 32', 36', and 48'
1 3/4" x 24": 16' to 20', 24', 36', and 48'

STANDARD OPTIONS

ABM PANEL - PREMIUM G100 GALVANIZED

Heavy-duty 28 gauge steel - in over 30 energy-efficient colors with 40-year, no-hassle paint warranties - heat-formed and rolled to custom lengths in hours... not days.



Substrate: G100 galvanized steel is made by passing bare steel through a bath of molten zinc at 842 degrees Fahrenheit for a final coating consisting of 1 oz. of zinc per square foot. The zinc coating that gives the steel sheet its resistance to weathering and rust offers better cathodic or sacrificial protection for scratches and cut edges.

Because galvanized steel is known to resist ammonia better than Galvalume®, we strongly recommend galvanized steel in the presence of vapors from animal confinement.

Paint: After the galvanized coating is applied, the coils are coated with Sherwin-Williams' WeatherXL SMP resin system that is backed by 40-year limited warranties.

Heat Forming: Heat forming practically eliminates a likely point of failure by significantly reducing the microscopic paint cracking and crazing during the forming process which may lead to paint failure and tension bend staining. Heating the panel before bending temporarily softens the paint which allows it to flex as the panel is formed and shaped.

Roll Forming: As the 5-ton metal coils are unrolled and passed through the heat former, the flying sheer jumps into action and cuts the metal to custom lengths with great precision. Without slowing down, all panels are imprinted on the underlap of the panel with order number, material grade, part ID, and panel length for customer assurance and warranty information. Then the sheets speed through a series of dyes that shape the metal into our precise profile and the finished panels are stacked and packaged for shipment to the job site.

Coverage (width): 36"
Rib Spacing: 9" on center
Rib Height: 3/4"
Gauge: 28 ga Steel



AVAILABLE UPGRADES

GLARE-RESISTANT TEXTURED

The unique texture redirects light for enhanced visual depth, promising an improvement over flat panels' appearance. Formulated with enhanced WeatherXL silicone polyester, this product delivers proven superior quality for outstanding performance. For all its beauty, it features an enduring weatherability to resist fading and chalking.



Available in 9 energy efficient colors in the ABM Panel profile, ABSeam Panel Profile, Continuous Corrugated Panel profiles, and R Panel profile.

ABSEAM PANEL

Our durable 24 ga. ABSeam Panel is the ultimate choice for a beautiful, long-lasting standing-seam metal roof.

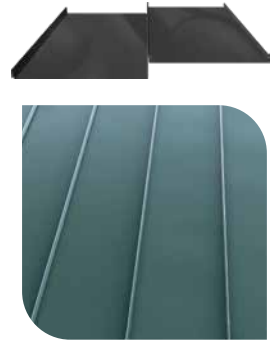
Height: 1.5" ribs.

Width: Standard width is 19.5", but can be made narrower for smaller applications.

Gauge: 24 gauge steel.

Weight: Approx. 11lb per square foot.

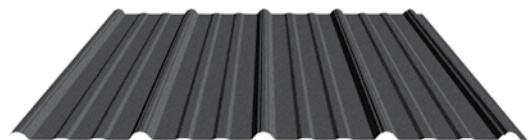
Finish: Sherwin-Williams' Fluoropon® PVDF system is backed with a 40-year limited paint warranty.



ABM PANEL - STANDARD GALVALUME® (DOWNGRADE)

Galvalume® is made from bare steel covered with a mixture of zinc, aluminum, and trace amounts of silicon to improve its long-term weathering capabilities. Painted Galvalume® is known to exhibit more short-term edge rust and tension bend stains than Galvanized.

Because galvanized steel is known to resist ammonia better than Galvalume®, we strongly recommend galvanized steel in the presence of vapors from animal confinement.

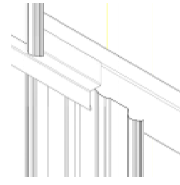


STANDARD OPTIONS

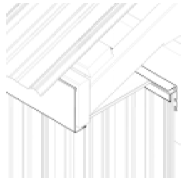
AVAILABLE UPGRADES

**BASE ANGLE**

Start with a Base Angle for an easy way to perfectly align the entire bottom row of wall panels.

**DOUBLE ANGLE**

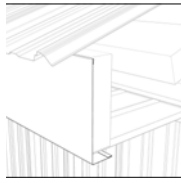
Commonly used to provide a straight edge between multi-layers of panels such as when adding a wainscoting or finishing the gable.

**F&J CHANNEL**

Commonly used to connect our steel or vinyl soffit with the ABM Panel. Also great for interior use when you need to connect the ceiling panels with the wall panels.

**RESIDENTIAL RAKE**

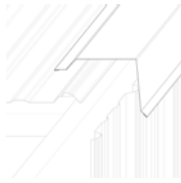
Designed for trimming a sloping roof with the lower level side wall. Can also be used as an outside vertical corner.

**POST/FASCIA TRIM**

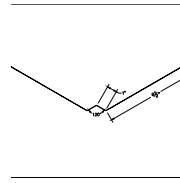
Multiple sizes to fit most headers and posts in stock

**INSIDE CORNER**

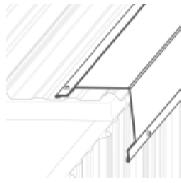
Used for finishing the inside corner of a wall.

**GABLE FLASHING**

Designed for trimming a sloping roof with the lower level side wall. An extra lip helps deflect precipitation from the wall panels.

**FORMED VALLEY**

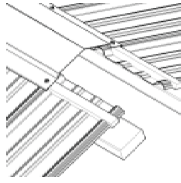
Wide enough to ensure proper overlap to prevent moisture from seeping up under the two opposing roofing panels.

**RAKE & CORNER**

Similar to but smaller than the Gable Flashing, the Rake & Corner is designed for an outside vertical corner. Can also be used for trimming a sloping roof with the lower level side wall.

**GUTTER APRON**

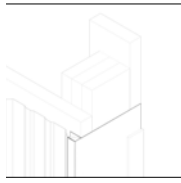
Flat end goes under your roofing, while the hemmed end folds down to provide coverage over your header or post fascia trim.

**RIDGE CAP**

Finish off your roof with the Universal Ridge Cap to allow the heat to escape the attic space and allow fresh air to infiltrate the building.

**J CHANNEL**

From trimming walls to trimming windows and doors, the J Channel is one of the most versatile and most used trim pieces.

**OVERHEAD GARAGE DOOR TRIM**

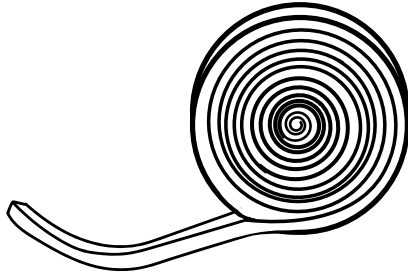
Designed for the sides and top of an overhead garage door entrance.

STANDARD OPTIONS

ULTRAVENT

The universal ventilation system that conforms to any roof panel. It compresses and fills every void between your ridge cap and the roof panel. Factory applied glue strips allow the installer to roll out UltraVent and apply it to the roof panel, even in windy conditions.

Size: 1" x 1.5" x 20' roll

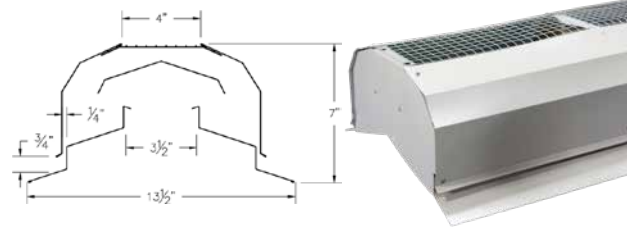


AVAILABLE UPGRADES

AB 35 RIDGE VENT

Proper ventilation in your ceiling or attic has been known to extend the life of your building and decrease heating and cooling costs. The AB35 Ridge Vent does double-duty as a ridge cap and ventilation system combined. The heavy-duty as ridge cap and ventilation system combined. The heavy-duty system is also completely waterproof with the clear poly rain diverter that also doubles as a skylight. A steel diverter is available upon request.

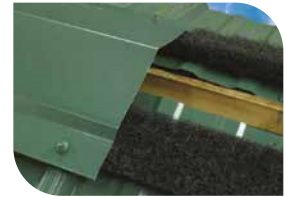
Size: 13.5" x 7" x 10'



PERFORM VENT

Ridge ventilation cut-to-fit the ABM panel profile with pre-applied glue for fast installation.

Comes in two 50' Rolls.



EMSEAL

EMSEAL MST Multi-Use Sealant Tape is a preformed expanding tape seal. MST compresses uniformly without overspill to provide a lasting seal.

Size: 1" x 1" x 20' (expanded)



GABLE VENTS

A wide variety of functional and decorative vents are available in vinyl and steel.



STANDARD OPTIONS

In order for the hot air to escape out of the ridge vent, fresh air needs to enter the building from somewhere, and our vented soffit allows the correct amount of fresh air to equalize the air pressure cause by the escaping heat.

WHITE VINYL CENTER-VENTED SOFFIT

Free air space area per square foot: 5.87 sq. in.

Size: 12" x 12'

Rib Size: .036" Thick



ST WOODBINDER

Fastener designed to attach steel roofing & siding used in post-frame & residential metal roofing applications.

Threads transition from fine to coarse to generate superior holding strength in various wood substrates.

Micro-Bit point reduces metal shavings that can embed themselves in the rubber washer.

EPDM rubber is vulcanized to a steel washer to form an excellent seal even when driven at an angle.

Powder-coated to match our metal colors.

Typical Sizes:

1.5" for your roof.

1" or 1.5" for your side walls.

2" for your ridge cap.



AVAILABLE UPGRADES

VENTED STEEL SOFFIT

Our vented steel soffit is formed and perforated in-house and is a key aspects of a good attic ventilation system. Vented soffits work especially well with our AB-35 Ridge Vent.

Made from heavy-duty 29 gauge steel and available in over 45 colors.

Coverage: 12" x 11.5" in stock.
Custom lengths available from 5 inches to 24 feet.



SOLID STEEL SOFFIT

Our solid steel soffit is formed in-house and made from heavy-duty 29 gauge steel and available in over 45 colors.

Coverage: 12" x 11.5" and 12" x 17.5" in stock.

Custom lengths available from 5 inches to 24 feet.



ST ZXL WOODBINDER (40-YEAR WARRANTY)

Designed to fasten steel roofing to the wood purlins used in post-frame construction or the plywood/OSB used in residential construction.

5/16" cupped HWH with a molded ZAMAC 5 Zinc-Aluminum alloy provides lifetime protection against red rust on the head & washer. The ZAMAC 5 alloy provides more strength than more common ZAMAC 3 alloy.

Threads transition from fine to coarse to generate superior holding strength in various wood substrates.

Micro-Bit point reduces metal shavings that can embed themselves in the rubber washer.



STANDARD OPTIONS

GRIZZLY DOORS - 6 PANEL OR 9 LITE

The most common Grizzly door is 3' wide by 6'-8" high (otherwise known as a 30 68) with a 4 ½" jamb in either the 6 panel (pictured left) or the 9 Lite (pictured right), but many options are available in sizes, swings, windows, and jamb thickness.

The Grizzly Series Door features a vinyl jamb and brick moulding with a fiberglass door skin which creates a long-lasting, paintable door.

The doors come pre-hung for easy installation and prepped for a lockset with a 2.75" backset.

The grizzly door is insulated, features weatherstripping, and comes with a 25-year limited warranty.



4X6 - DOOR POST

A 4x6x12 treated post will be needed to frame the side of your door opening.



AVAILABLE UPGRADES

GRIZZLY DOORS - 60 68

Need a wider doorway only occasionally? Upgrade your entryway to the Grizzly fiberglass double door.

Most of the time you'll only be using the either left-active or right-active door, but both doors can open when you need it. Ask for the Grizzly 60 68.



CANNONBALL FIBERGLASS DOOR - #52 SERIES

1 5/8" thick insulated capped edge panel with aluminum jamb, header, and threshold.

Available with a solid panel, or different window options and sizes.



CANNONBALL STEEL DOOR - #1734 SERIES

1 3/4" thick insulated rolled edge panel. Pre-painted aluminum jamb with nailing flange jambs, header, and threshold.

Ideal for installing in sliding door. Only available as a solid panel (blank) with universal swing.



AJ STEEL DOOR - R51 SERIES

Pre-hung on a 16 gauge steel frame and comes with weatherstripping and bulb gasket.

Blank and window options available.



AJ COMMERCIAL STEEL DOOR - 5100 SERIES

Pre-hung on a 16 gauge 3-1/2" wide steel frame with ADA compliant threshold, and comes with weatherstripping and bulb gasket. Strengthened with aluminum reinforcing block at locations for entry lock, dead bolt, panic hardware, and closure. Filled with high-density molded urethane.

Blank and 9-lite window options available.



STANDARD OPTIONS

HOLMES SILVER SERIES OVERHEAD DOOR

The Silver Series features a heavy-duty 2-layer construction (steel front and vinyl back) with insulation for added comfort, energy efficiency, and quiet operation.

Comes with the weather stripping, track, and spring(s). Upgrade for more color and window options.

25-year limited warranty.



SLIDING DOOR

Few door options are as versatile and customizable as a roll track sliding door.

Kits for many size doors are available that include the round track, cover brackets, side rail, lag screws, end caps, trolleys, hardware, jamb latch, bottom guides, and track cover.

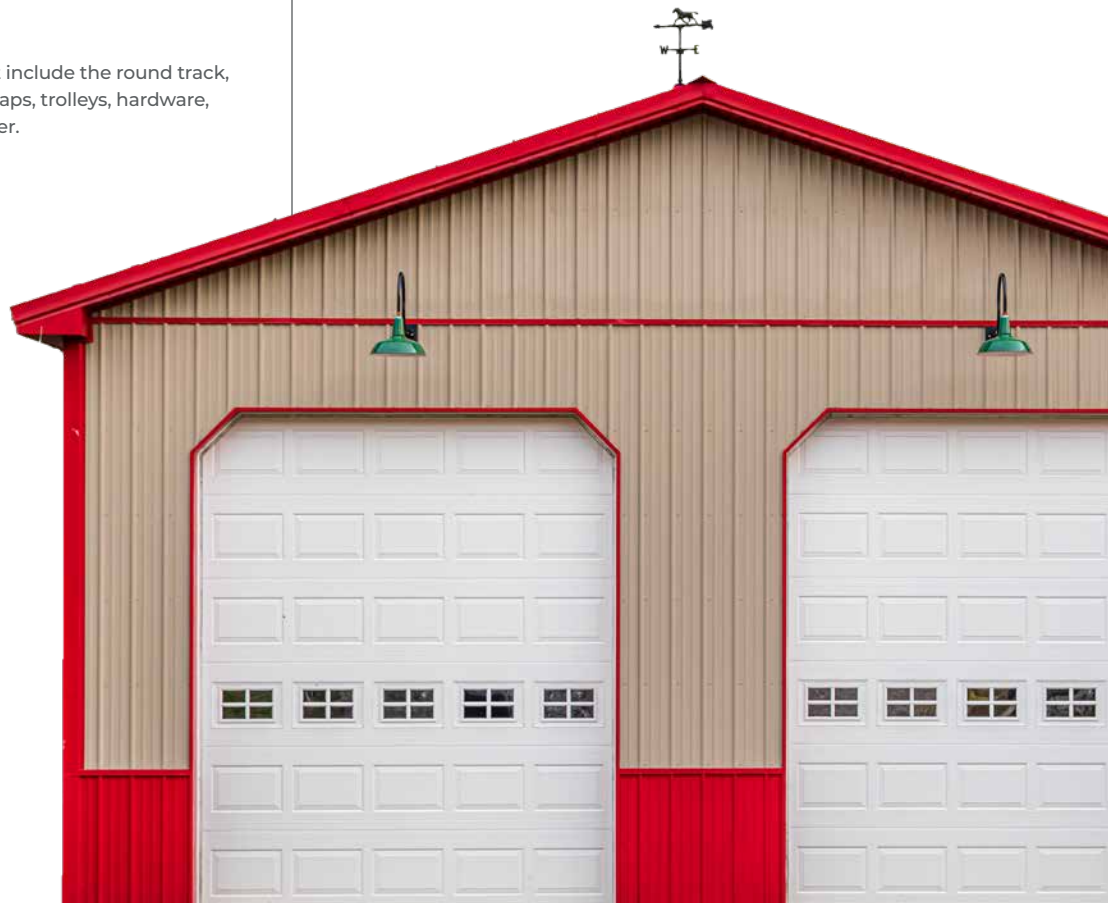


AVAILABLE UPGRADES

HOLMES GOLD SERIES OVERHEAD DOOR

Holmes Overhead Garage Door Company® offers a complete line of top quality doors. From traditional raised panel doors to carriage house style doors, contemporary styles, and even commercial overhead garage doors.

The Gold Series features more insulation, higher R-value, superior durability, more color and style options, more window options, and a lifetime limited warranty.



AB MARTIN CUPOLAS

Available in 16", 24", 36", and 48" square. Custom made to match the color and roof slope of your building. Windows are optional in 24", 36", and 48" cupolas.

The cupolas come pre-assembled for easy installation.

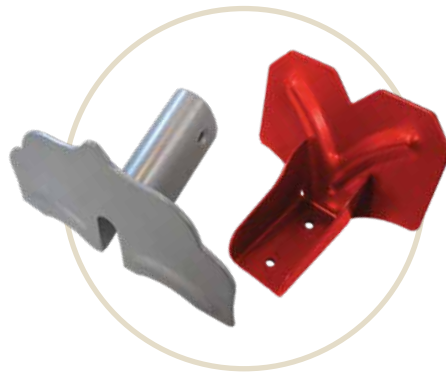
Many rust-proof aluminum weathervanes in stock.



SNOW DEFENDER

Levi's Snow Defender stainless steel snow guards provide long-lasting protection against crushing snow slides.

16-gauge stainless steel powder coated to match our metal roofing colors. Stocked in the 4500 series for exposed fastener metal roofs like the ABM Panel and the 6500 series for hidden fastener metal roofs like the ABSeam Panel.



S-5!® SNOW RETENTION SYSTEMS

When you need heavy-duty and versatile snow retention, S-5! has some of the toughest and longest lasting products in the industry. Its innovative mechanical attachment technology utilizes specially engineered clamps that fit almost any roof panel.



SUNSKY SKYLIGHTS/SIDLIGHTS

SunSky corrugated polycarbonate skylight panels stand up to punishing exterior applications and offer multiple advantages over traditional fiberglass corrugated panels. SunSky provides up to 20x greater impact resistance, warranted protection against yellowing, excellent load ratings, and the highest resistance to wind uplift.

Available with 36" wide coverage in various lengths and light diffusion.

Sunlite (Multiwall) sidelights sheets yield a strong, insulating, lightweight, attractive sheet for varied roofing, cladding, and glazing. Sunlite is used in markets as diverse as construction, agriculture, industry, and advertising.

Available in 6mm and 8mm, 4' wide, and 8',10', & 12' long.



FRP GLASSBOARD

Fiberglass reinforced wall and ceiling panels are durable, clean, and easy to install. FRP Panels are ideal for areas where cleanable and sanitary finish are essential.

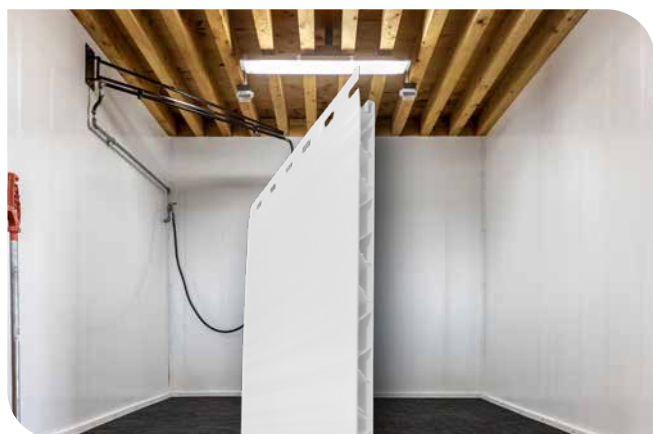
A Grade and sorted factory rejects (with little or no sacrifice of quality) are available. Call for availability and options.



TRUSSCORE™ WALL & CEILINGBOARD

Wherever you need a smooth finish that is easy to clean, low-maintenance, and abuse-resistant, TRUSSCORE PVC Sanitary Wall and Ceiling Panel has your project covered. 16" wide, 1/2" thick, and comes in standard 10', 12', 14', 16', and 20' lengths.

Trusscore's unique tongue-and-groove interlocking system makes both vertical and horizontal installation quick and easy.

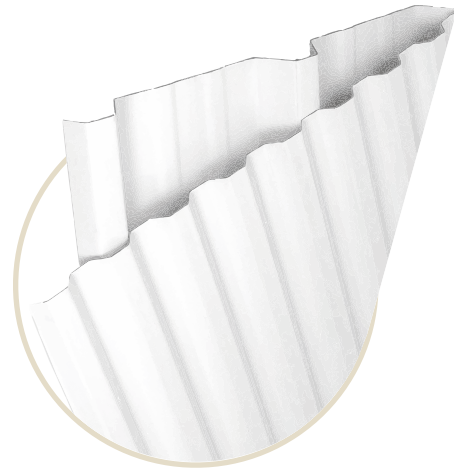


AGTUF® / AGTUFUV®

Ag-Tuf® corrugated PVC liner panel allows efficient cladding of structures with many benefits for all types of agricultural applications. From hog barns to dairy sheds, from poultry houses to wineries and more, Ag-Tuf® and Ag-Tuf® UV hold up where other products won't. Ag-Tuf®'s resistance to chemicals allows for frequent cleaning and sanitary maintenance, as well as extended service in harsh chemical environments.

The Ag-Tuf® panel is extremely easy to install and maintain using ordinary tools, while preserving its attractive glossy appearance over a long period of time.

Ag-Tuf® carries a 10-Year Manufacturer's Limited Warranty. Ag-Tuf® UV carries a 5-Year Limited Warranty.



FLAT TRACK SLIDING DOORS

Give your barn a classic look with the high-quality, powder-coated flat track sliding door hardware. Elegant enough to use inside and durable enough to use outside.



GUTTERS AND DOWNSPOUTS

Direct rainwater away from your foundation, siding, and landscaping with rust-proof aluminum gutters. Stocked in white and brown aluminum k-style gutter and in the historical half-round gutter. Also stocked in the un-painted galvanized gutter and premium copper half-round gutter.

Special order colors to match most of our metal roofing and siding colors are available.



WINDOWS

The 3500 Single-Hung Window is one of MI's best vinyl windows. This vinyl single-hung window offers handcrafted quality, exceptional durability, and optimal energy efficiency. With standard features that include a pre-punched mounting fin and removable sash for easy drywall pass-through, our 3500 window is ideal for any new home construction project. A full-length lift rail and metal reinforcements at the meeting rail provide aesthetic and performance benefits that complement the window's builder-friendly attributes.



RAISED PANEL SHUTTERS

Boldly designed and stocked in a wide range of colors, the standard Williamsburg raised panel shutter is an excellent choice for Cape Cod, Federal, Shingle, Foursquare, and other style homes and pole barns. The deep texture and precise construction provides the look of authentic raised double panels.

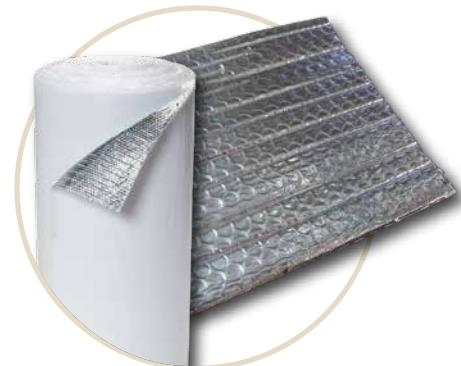
Available in two sizes: 14.75"x47" and 14.75"x43"



DOUBLE BUBBLE INSULATION VAPOR BARRIER

Double Bubble insulation employs a patented technology which consists of a layer of polyethylene bubbles bonded to and sandwiched between a radiant barrier of metalized foil and/or a white polyethylene sheet with washable UV-resistant facing.

Stop condensation, ammonia vapors, and up to 97% of radiant heat transfer.



BLOWN INSULATION

Insulating your attic with blown fiberglass insulation can have an average return on investment of 108%!

PROPINK® L77 PINK® Fiberglas™ Unbonded Loosefill Insulation is an alternative to roll or batt insulation in attics, new construction, or retrofit applications.

Sanctuary Blown Cellulose Insulation offers enhanced thermal efficiency and noise reduction in a 25 lbs. low-dust package. Ideal for attics, new constructions, or retrofits, its loose fill fibers efficiently fill gaps and voids, forming an energy-saving blanket that maintains indoor comfort in both cold and hot conditions. This fire-resistant insulation, composed of up to 85% recycled material, meets Class 1 Fire Rating standards, adding a layer of safety to homes by allowing more time for evacuation.



FIBERGLASS INSULATION

Owens Corning is a world leader in building materials and systems, delivering a broad range of high quality products and services. Products include multiple types of insulation and roofing for commercial, residential, and industrial applications. Owens Corning has an insulation solution for virtually any building situation. From exterior walls to roofing systems to HVAC/mechanical/piping, Owens Corning insulation products can help your project achieve high level thermal performance, air/water resistance, moisture control, acoustical performance, LEED® certification, and energy and building code compliance.





**35 Ridge Road
Newville, PA 17241**

**717-776-5951
Fax: 717-776-0112**

Distributed by

